



AH68-01292D (Rev 2.0)

SAMSUNG

YP-55

DIGITAL AUDIO PLAYER

yepp™



MP3 & WMA Playback
Removable Storage Device
Encoding Function
3D Sound
Upgradable
FM Reception



Contents

Preparations

Safety Instructions	4
Features	6
Components	9
Location of Controls (yopp)	10

Connection to Computer

Connecting yopp to PC	12
Manual Installation of USB Driver	16
Using the removable storage(PC)	20
● Downloading/Uploading files	20
● Disconnecting the USB cable	21
● Formatting	22
Installing yopp Studio.....	23
● To View Help on yopp Studio	25

Basic Usage

Listening to Music with yopp	26
Setting up Volume/Hold Function	27
Changing Modes	28
Recording Voice.....	29
MP3 Encoding	30
Searching for Music/Voice Files	32
Listening to FM Radio	34
FM Encoding	36

Additional Usage

Loop Repeating	37
Setting up SRS	38
Using Navigation	39
Setting up Play List	40
Setting up MENU	41
Repeating Tracks	42
Setting up EQ	43
Managing Files	44
● Deleting	44
● Formatting	45
Customizing Options (Display)	46
● DISPLAY	47
● BACKLIGHT	47
● BEEP	48
● CONTRAST	48
● SCROLL SPEED	49
● POWER OFF TIME	49
● DEFAULT VOLUME	50
● WOW LEVEL	51
● ENCODE	52

Appendix






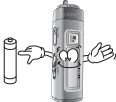



Description of Buttons (yopp player)	54
MENU Table	56

Customer Support

Troubleshooting	58
Specifications	60

Safety Instructions

Read and understand all the instructions to avoid injury to yourself and damage to the equipment.

<p>Do not expose to extreme temperatures (above 95°F or below 23°F). Do not expose to moisture.</p> 	<p>Do not apply excessive pressure to the device.</p> 	<p>Do not let any foreign matter spill into the device.</p> 
<p>Do not place heavy objects on top of the device.</p> 	<p>Do not expose to chemicals such as benzene and thinners.</p> 	<p>Remove batteries when the device is left unused for a long period of time.</p> 
<p>Do not expose to direct sunlight or heat sources.</p> 	<p>Do not store in dusty areas.</p> 	<p>Do not try to disassemble and repair the device yourself.</p> 

Earphones

Follow Traffic Safety Instructions

- Do not use the earphones while driving an automobile or riding a bicycle. It's not only dangerous, but also against the law.
- It may cause an accident if you turn up the volume of the earphones while walking down the street, especially crossing at intersections.

Protect your ears

- Do not turn up the volume too high. Doctors warn against prolonged exposure to high volume.
- Stop using the device or turn the volume down if you have ringing in your ears.

Ambient operating conditions

- Ambient temperature: 5°C ~ 35°C (41°F ~ 95°F)
Humidity : 10 ~ 75%

Environmental Information

- Follow local guidelines for waste disposal when discarding packages, batteries, and old electronic appliances.
- Yepp packages use cardboard, polyethylene etc., and do not use any unnecessary materials.

Please be aware that we claim no responsibility for damage from data loss due to breakdown, repair or other causes.

DIGITAL SOUND yepp'

Removable Storage Device

You can easily copy and paste files to the yepp player using Windows Explorer.

Featuring an Encoding Function

You can make a MP3 file out of an source using the ENC jack on the main unit.

You can also convert an FM radio program into an MP3 file in real time.

Upgradable

You can upgrade the built-in programs when available.

Add functions, CODEC, etc.

Please check the yepp home page for upgrades.

DIGITAL SOUND yepp'

MP3 & WMA Playback

MP3 is an MPEG1 Layer3 audio format.

WMA is a Microsoft Windows Media audio format.

FM Reception

Listening to an FM program is made easy with Auto Search and Frequency Memory functions.

Featuring 3D Sound

The 3D feature adds spaciousness to the sound.

DIGITAL SOUND yepp'

Voice Recording Function

You can do a Voice Recording with high quality and use it for a conference.

Sound

You can adjust equalizer manually.

15-Hour Continuous Play

This unit uses one AAA/LR03 alkaline battery. Operation can last up to 15 hours. Actual playing time may vary according to the type and capacity of the battery.

Components



yepp'

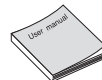
Player



Earphone



USB Cable



User manual



Installation CD



One Battery
(1.5V AAA/LR03 type)



Neck Strap



Carrying case



Direct Connect
USB Adaptor

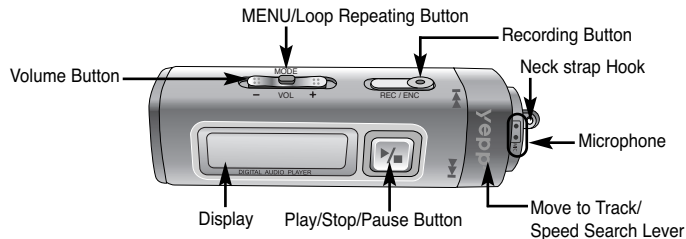


Line Cable

Model	YP-55 H	YP-55 i	YP-55 V	YP-55 X
Built-in memory	128MB	192MB	256MB	512MB

- The capacity of the useable built-in memory is less than indicated as the internal firmware uses a part of the memory as well.
- Design of accessories is subject to change for improvement without notice.

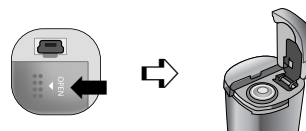
Location of Controls (yepp)



Display



Inserting a Battery



1 Slide the cover in the direction of the arrow to open.

2 Insert a battery to the right poles +, - and push-close the cover in the direction the arrow as indicated.

Note :

- Do not place heavy objects on the cover.

Connecting yepp to PC

System Requirements.

- Pentium 133MHz or greater
- Windows 98 SE/ME/2000/XP
- 20MB of available hard disk space
- CD-ROM drive
- (double speed or greater)
- USB port (1.1) supported
- VGA graphic

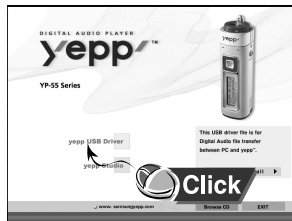
Note :

- Install the operating system in Administrator Account mode for Windows 2000 or XP. Otherwise, installation will not be completed.
- Windows ME, 2000 and XP can recognize the driver without installing the provided program. However, you must install the program in order to format yepp and upgrade firmware.
- If the YP-55 program has not been installed in Windows 98, then it will not communicate with your removable disk. You must install the USB driver file first.

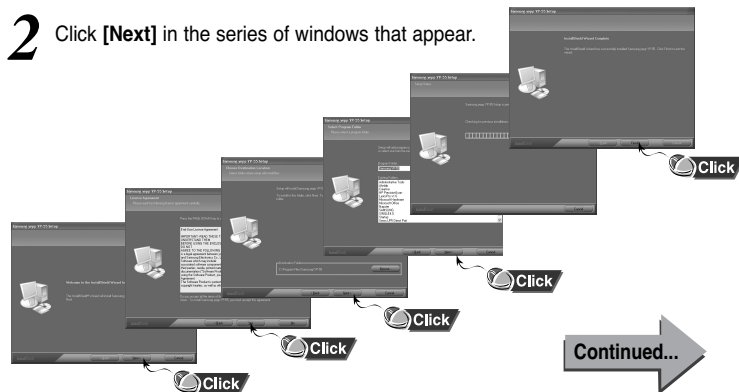
Before connecting yepp to PC, make sure to install USB driver. If "Add New Hardware Wizard" appears, press the [Cancel] button and install USB driver.

Installing software

- 1 Insert the Installation CD into CD-ROM drive. The picture shown below appears. Select [USB Driver Install].



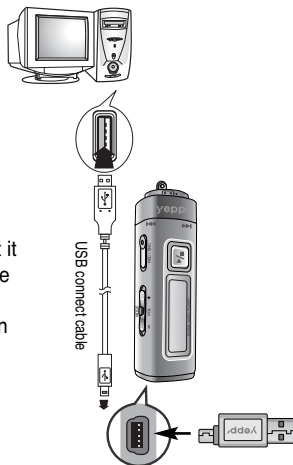
- 2 Click [Next] in the series of windows that appear.



When installation is completed, connect yepp to PC and use it as shown on the next page.

Connecting yepp to PC with USB cable

- 3 Plug one end of the USB cable into the USB port on the back of the PC.
- 4 Connect the opposite end of the USB cable to the USB cable port on the bottom of the yepp.
 - If you disconnect the USB cable from your PC while implementing a command or initializing during USB driver installation, your PC may not function correctly.
 - The yepp will automatically turn on.
- 5 USB driver is installed with a message saying that it is searching for a new device. You may not see the display screen during installation. Go to the device manager to check that installation has been successfully completed.
- 6 Upon installation of the USB driver "SAMSUNG YP-55" will appear in the [System Properties] → [Device Manager].



Note :

How to check USB driver

Windows 98:

Control Panel → System → Device Manager → Universal Serial Bus controllers/Samsung YP-55 Class

Windows 2000:

Control Panel → System → Hardware → Device Manager → Universal Serial Bus controllers → USB Mass Storage Device

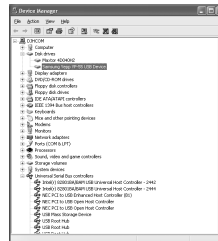
Windows XP:

Control Panel → System → Hardware → Device Manager → Universal Serial Bus controllers → USB Mass Storage Device

- 7 When USB driver is not installed automatically, refer to next page.

Note :

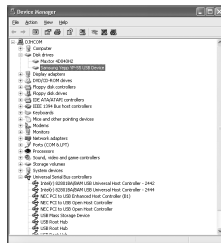
For WinXP, the following window will appear whenever you connect the USB cable to your yepp.



Manual Installation of USB Driver

Go to "Downloading/Uploading files" on page 20 if the USB driver is in place.
Follow these steps if the USB driver is not in place :

- 1 Check the device manager.
Windows 98, ME:
Control Panel → System → Device Manager
Windows 2000:
Control Panel → System → Hardware → Device Manager
Windows XP:
Control Panel → System → Hardware → Device Manager



- 2 Check if there is a device listed with an exclamation point or a question mark (displayed as unknown device or USB device).

- 3 Double click on the device listed with an exclamation point or a question mark.

Note :

- If you are using Windows 2000 and your version of Windows does not recognize the USB driver please download and install the latest service pack from windowsupdate.microsoft.com
- The installation method may vary depending on the type of PC or operating system. Contact your PC dealer or service center for installation information.
- If errors occur continuously when you install the USB driver, reconnect the USB cable after rebooting your system.

- 4 After selecting the driver, click on **[Update Driver]**.



- 5 Select a compatible driver, click on **[Next]** to finish.



For Windows 98, refer to page 18.

Continued...

In Windows 98

Click **[Next]** button in the series of windows that appear.



USB driver location
[CD ROM]\setup\Drivers



- You must reboot your computer to complete the installation.

101010101101001010

- 



	1980	1985	1990	1995	2000	2005	2010	2015	2020
Population	76.5	80.5	84.5	88.5	92.5	96.5	100.0	103.5	107.0
GDP per capita	1,000	1,200	1,400	1,600	1,800	2,000	2,200	2,400	2,600
Life expectancy at birth	65	68	71	74	77	80	83	86	89
Urban population (%)	35	40	45	50	55	60	65	70	75
Employment rate (%)	55	58	61	64	67	70	73	76	79
Unemployment rate (%)	15	12	10	8	7	6	5	4	3
Government expenditure as % of GDP	15	18	21	24	27	30	33	36	39
Private consumption as % of GDP	55	58	61	64	67	70	73	76	79
Investment as % of GDP	10	12	14	16	18	20	22	24	26
Exports as % of GDP	10	12	14	16	18	20	22	24	26
Imports as % of GDP	10	12	14	16	18	20	22	24	26
Current account balance as % of GDP	-5	-4	-3	-2	-1	0	1	2	3
Foreign direct investment as % of GDP	0	1	2	3	4	5	6	7	8
Official development assistance as % of GDP	0	1	2	3	4	5	6	7	8
Net international reserves as % of GDP	0	1	2	3	4	5	6	7	8
Public debt as % of GDP	10	12	14	16	18	20	22	24	26
Household savings as % of GDP	10	12	14	16	18	20	22	24	26
Corporate savings as % of GDP	10	12	14	16	18	20	22	24	26
Government savings as % of GDP	10	12	14	16	18	20	22	24	26
Total savings as % of GDP	30	34	38	42	46	50	54	58	62
Capital formation as % of GDP	10	12	14	16	18	20	22	24	26
Fixed capital formation as % of GDP	10	12	14	16	18	20	22	24	26
Consumption of fixed capital as % of GDP	10	12	14	16	18	20	22	24	26
Government consumption as % of GDP	10	12	14	16	18	20	22	24	26
Private consumption as % of GDP	55	58	61	64	67	70	73	76	79
Government consumption as % of GDP	10	12	14	16	18	20	22	24	26
Private consumption as % of GDP	55	58	61	64	67	70	73	76	79
Government consumption as % of GDP	10	12	14	16	18	20	22	24	26
Private consumption as % of GDP	55	58	61	64	67	70	73	76	79
Government consumption as % of GDP	10	12	14	16	18	20	22	24	26
Private consumption as % of GDP	55	58	61	64	67	70	73	76	79
Government consumption as % of GDP	10	12	14	16	18	20	22	24	26
Private consumption as % of GDP	55	58	61	64	67	70	73	76	79
Government consumption as % of GDP	10	12	14	16	18	20	22	24	26
Private consumption as % of GDP	55	58	61	64	67	70	73	76	79
Government consumption as % of GDP	10	12	14	16	18	20	22	24	26
Private consumption as % of GDP	55	58	61	64	67	70	73	76	79
Government consumption as % of GDP	10	12	14	16	18	20	22	24	26
Private consumption as % of GDP	55	58	61	64	67	70	73	76	79
Government consumption as % of GDP	10	12	14	16	18	20	22	24	26
Private consumption as % of GDP	55	58	61	64	67	70	73	76	79
Government consumption as % of GDP	10	12	14	16	18	20	22	24	26
Private consumption as % of GDP	55	58	61	64	67	70	73	76	79
Government consumption as % of GDP	10	12	14	16	18	20	22	24	26
Private consumption as % of GDP	55	58	61	64	67	70	73	76	79
Government consumption as % of GDP	10	12	14	16	18	20	22	24	26
Private consumption as % of GDP	55	58	61	64	67	70	73	76	79
Government consumption as % of GDP	10	12	14	16	18	20	22	24	26
Private consumption as % of GDP	55	58	61	64	67	70	73	76	79
Government consumption as % of GDP	10	12	14	16	18	20	22	24	26

- ing file
while
function
- d in
- r
plorer.

Completing the file

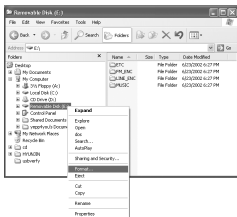


Continued...

Installing yepp Studio

Formatting

- 1 Select the removable disk icon and click the right mouse button to select **[Format]**.
- 2 Press the **[Start]** button after selecting FAT in file system menu.
 - All saved files will be formatted.
 - You can change the name of the removable disk by selecting **[Volume label]**.



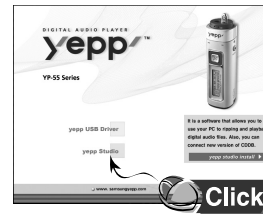
Notice :

- If you format yepp in the PC without installing the provided program, it may not read the data.
- Care must be taken as formatted files can not be recovered.
- By formatting, all previously preset menus will be initialized.

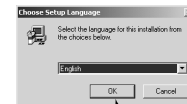
Note :

- You can format by executing "YP-55 Format" located under **[Start] → [All Programs]**

- 1 Insert the Installation CD into CD-ROM drive.
Select **[yepp studio]**.



- 2 Select language



Continued...

- 3 Click **[Next]** in the series of windows that appear.
- Please refer to Help for more information on how to use yepp Studio.



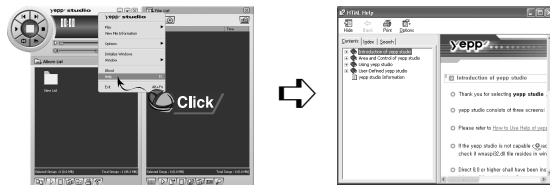
To View Help on yepp Studio:

Run yepp Studio and press **F1**.

- Help will appear.

Move the arrow to the top of yepp Studio and right click on the mouse. The following selection window will appear.

- Click on Help and the Help window will appear.



Note :

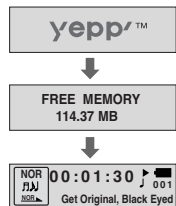
- Music recognition technology and related data are provided by Gracenote and Gracenote CDDB® Music Recognition ServiceSM.
- CDDB is a registered trademark of Gracenote. The Gracenote logo and logotype, the Gracenote CDDB logo and logotype, and the "Powered by Gracenote CDDB" logo are trademarks of Gracenote. Music Recognition Service and MRS are service marks of Gracenote.

Listening to Music with yepp

First, insert the battery and connect the earphones to the player.

Playing Music (Power On)

When you press the ►/■ button, the yepp logo appears and a music/voice file is played.



Stopping Music (Power Off)

When you press the ►/■ button while playing, the music stops. If no buttons are pressed within 10 seconds (changes depending on settings), the yepp automatically powers off.

- You can also turn off the power by pressing and holding the ►/■ button on the main body.




Note : ● WMA files less than 48Kbps may not be played.

WMA files can only be played at bit rates between 48Kbps and 192Kbps [supplied by Windows Media Player (Ver 8.0)].


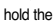
- Power off time can be set in the MENU mode.

Setting up Volume/Hold Function

Adjusting the Volume

Move the  button on the side of the yepp player to adjust the volume while playing.


Note :

- Volume ranges from 00 to 30.
- Move the  button to adjust the volume by one level.
Move and hold the  button to increase or decrease the volume in greater increments.

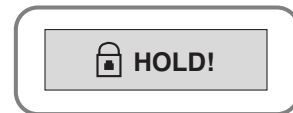


HOLD Function




Under Hold mode, buttons will not work.

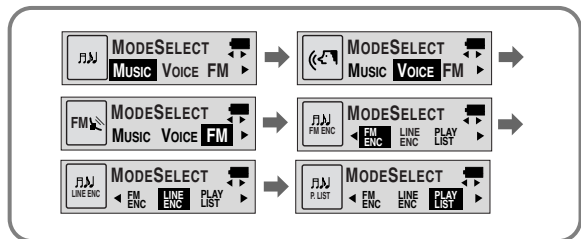
Slide the  switch on the player in the direction of the arrow.

- ✦ When a button is pressed, "🔒 HOLD!" message will appear on the display.



Changing Modes



- 1 Press the  button briefly while the player is stopped.
- 2 Move to the mode you want by using the  button, and then press the  button.

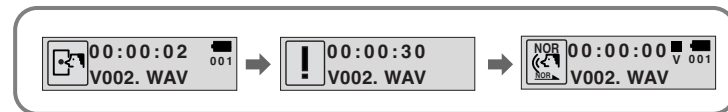


- Note :**
- You will exit from the Mode Switching function if no action is taken for 15 seconds or if another button is pressed during mode switching.
 - The Voice Mode settings will not be saved if the mode is switched to the Music or FM modes or if the power is turned OFF.

Recording Voice

To Record Voice

- 1 Slide the  switch to the ENC position to begin Voice Recording.
- 2 To stop the recording, move the  switch in the opposite direction and a new voice file will be created.

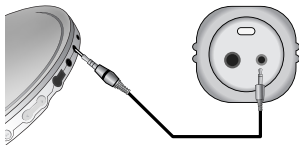



Note :


- Recording is done in the order of V001,V002.....
- If the Memory is full, the Voice Recording is stopped automatically.
- The Voice Recording is also enabled in Music Mode.
- The backlight will not illuminate during a Voice Recording.
- The number of saved voice files and hours available for recording will be displayed when Voice Mode is selected while the player is stopped.
- To Record Voice, be sure nothing is connected to the ENC jack.
- Voice Recording does not work in FM Mode or when the Line cable is connected.

MP3 Encoding

- 1** Connect the Audio Output port on the external audio source (or the Line Out port) to the ENC port on the device with the Line cable.



- 2** Slide the  switch to the ENC position begin MP3 encoding.

- 3** Slide the  switch to the REC position while recording to stop the encoding, and a new encoding file will be created.

- Recording will take place in the order of L001, L002, L003.... When the recording is finished, the files will be saved as MP3 files.

Note :

- Bit Rates can be set within the range of 32Kbps~128Kbps.
- To pause during Encoding, press the ►/■ button.
Press the button once again to recommence recording.
- Volume can be adjusted from level 0 to 10 while monitoring the Encoding.

Notice :

- Do not disconnect the Line cable during Encoding.
- If the battery is not charged enough, encoding will not be done.
- Adjust the volume of the external audio source to a suitable level and encode it.
If the volume level is extremely high, the sound quality may not be good.

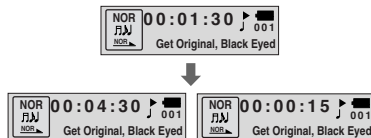
Searching for Music/Voice Files

Note :

- VBR(Variable Bit Rate) file:
MP3 file whose compression rate changes when played.
- With VBR files, Turning the lever to the \downarrow direction within 5 seconds from the start of the track may not result in the previous track playing.
- With VBR files, the actual running time may differ from that of the player display.
- This player may not play back MPEG1 LAYER1 files.

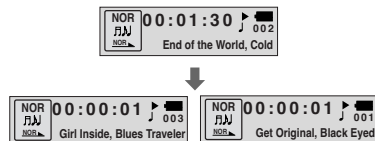
Searching for Specific Parts in PLAY Mode

- To find a certain track, turn the \uparrow/\downarrow lever to the up or down during play.
- Release the lever and the lever will return to its original position. Playing will recommence in the normal way.



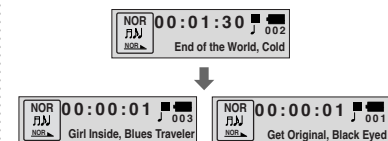
Searching for Music Files in PLAY Mode.

- The next track will play if you turn the lever to the \uparrow direction during play.
- To move to and play the previous track, turn the lever to the \downarrow direction within 5 seconds of the beginning of play. To move to and play the current track from the beginning, turn the lever to the \downarrow direction 5 seconds after the beginning of play.



Searching for Music Files in STOP Mode.


Turn the lever to the up or down while the player is stopped. It moves to the next or previous track.



Listening to FM Radio


While the player is stopped, select FM Mode by using the  button.

Manual Search for a Frequency

Turn the  lever briefly to find the frequency you want.




Manual Storage of a Frequency


Upon finding a frequency you want, press the  button to store the frequency.

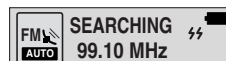


Note :

- To exit from FM Mode, press the  button.
- Mono (MO) or Stereo (ST) is automatically selected.

Automatic Search for a Frequency

Turn and hold the  lever to automatically find and tune in to a transmitted frequency.



Automatic Storage of a Frequency

- Press and hold the WOW button while in FM Mode.
- Frequencies within the range of 87.50MHz to 108.00MHz are automatically selected and stored.
- Frequencies are automatically stored, starting from 1.





Number of Channels to be Stored

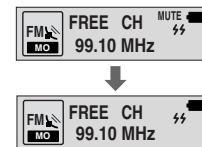
Searching Stored Frequencies

- Press the **WOW** button briefly while in FM Mode.
- The stored frequencies are successively searched.



MUTE Function

- Press and hold the  button while in FM Mode.
- As soon as 'MUTE' appears on the display no sound will be heard.
- To cancel the MUTE function, adjust the volume with  Switch.





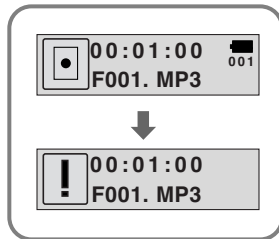
Note :

- You can store up to 20 frequencies.
- You can replace an existing frequency with a new one but you cannot delete a stored frequency.

FM Encoding

FM Encoding to MP3


- Slide the  switch to the ENC position during FM
 - Encoding of the currently transmitted FM broadcast begins.
- Slide the  switch to REC.
 - A file is created and the encoding stops.
 - Files are saved in order of F001, F002, F003... and stop automatically when the memory is full.



Loop Repeating

Loop Function

Starting Point

While playing music files, press the  button briefly at the beginning of the loop you want to set.

A appears in the display.




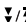

Ending Point

Press the  button briefly again to set the end of the loop.

A↔B appears in the display.
The loop is played repeatedly.

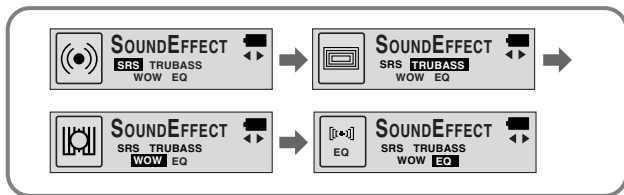


Note :

- Press the  button briefly to cancel the loop.
- Loop Repeat is automatically released if you Speed Search with  / .

Setting up SRS (Sound Retrieval System)

- 1 Press the **WOW** button while in Music Mode.
- 2 Press the **WOW** button to move, and then press and hold the **WOW** button to select the mode you want.



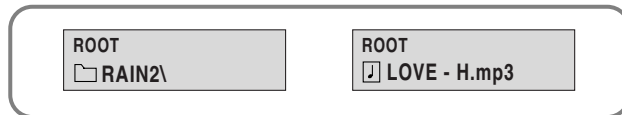
- **SRS** : You will hear 3D Stereo sound.
- **TRUBASS** : This is a bass boost feature that adds fullness to the sound.
- **WOW** : This feature allows you to enjoy the SRS and Trubass features simultaneously.
- **EQ** : Plays at the last EQ setting you made.

Note :

- **SRS** is a trademark of SRS Labs, Inc.
WOW technology is incorporated under license from SRS labs, Inc..
- Please adjust the volume to a suitable level, as the volume may increase in the SRS setting.
- This unit supports sampling frequencies of 32KHz, 44.1KHz or 48KHz.
- You can set SRS functions only in Music Mode.

Using Navigation

- 1 Press and hold the **WOW** button to enter Navigation Mode during playback.
 - Shows the file or folder that is currently being played back.



- 2 Select a folder or file to play back.
 - : To move to a higher-level folder
 - : To move to a sub-folder
 - VOL-, +: To move to files and folders under the same folder
 - MENU: To move to a sub-folder, or the selected file is assigned to the Play List.
 - SRS: To exit Navigation.
- 3 Press the button.
 - The Selected file is played back.
 - When a folder is selected, all the music files under the folder is played back.

Setting up Play List

- 1 Select files while in Navigation Mode and press the **MENU** button.
 - The Selected files are marked.




- 2 Select **PLAY LIST** using the **MODE** button while playback is stopped. (refer to “Changing Modes”)
 - The Marked Play List is played back.





Note :

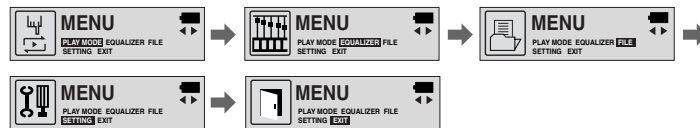
- Navigation cannot be performed when playing back the Play List.

Setting up MENU

To switch to Menu Mode, press and hold the  button while in Music/Voice Mode.

Press the  button briefly to select the menu you want.

To exit from Menu Mode, press and hold the  button once again.





- **PLAY MODE** : To select track repeating mode.
- **EQUALIZER** : To use equalizer function.
- **FILE** : To delete or format music files.
- **SETTING** : To change the basic setup options of the display.
- **EXIT** : To exit **MENU**.

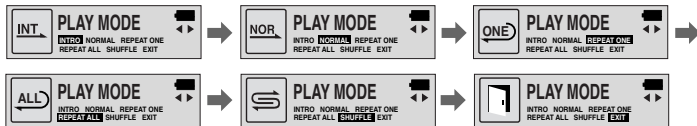
Note :

- In MENU mode, no input for 15 seconds will cancel the MENU mode.
- Menu mode will be released if any button other than the MODE button is pressed.

Repeating Tracks

Track Repeating Function


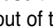
- 1 In **MENU**, select **PLAY MODE**. (refer to “Setting up MENU”)
- 2 In **PLAY MODE**, use the  button to move to the mode you want and press the  button to select.

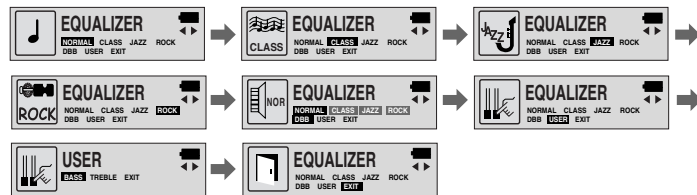


- **INTRO**: To play the first 10 seconds of each track.
- **NORMAL**: To play all the tracks in order one time.
- **REPEAT ONE**: To repeat one track.
- **REPEAT ALL**: To repeat all tracks.
- **SHUFFLE**: To play tracks at random.
- **EXIT**: To move to the upper menu.

Setting up EQ

EQ Function

- 1 In **MENU**, select **EQUALIZER**. (refer to “Setting up MENU”)
- 2 In **EQ**, use the  button to move to the setting you want (out of the 4 settings) and press the  button to select.
 - Select the DBB Mode if you want to fine-tune the sound.
- 3 If you want to manually adjust the equalizer, select **User** and **Bass/Treble**.
 - The adjustment range of Bass/Treble is 0 to 10.




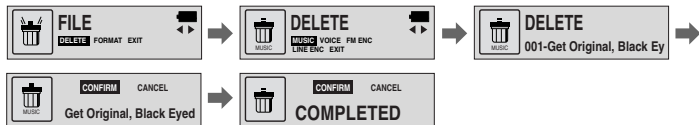
Note :

- DBB is for Dynamic Bass Booster, which enhances bass response.

Managing Files

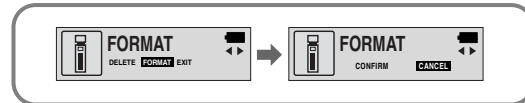
Deleting

- 1 In **MENU**, select **FILE**. (refer to “Setting up MENU”)
- 2 In **FILE**, select **DELETE** and the mode (Music or Voice) the target file is in.
- 3 Move to the file you want to delete and then press the  button. Select **CONFIRM** and then select **CANCEL** to exit from the setup.



Formatting

- 1 In **MENU**, select **FILE**. (refer to “Setting up MENU”)
- 2 In **File**, select **FORMAT**.



Note :

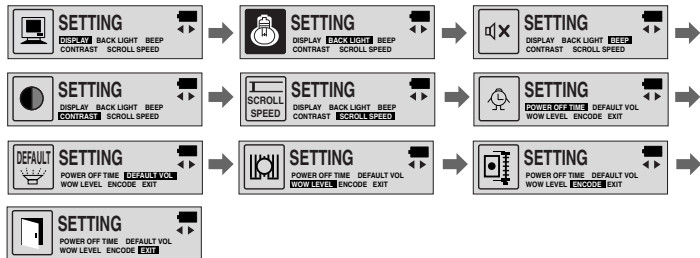
- All files will be deleted when formatting the built-in memory.
- It is recommended that formatting be carried out on a PC as formatting in the Menu may take a long time.

Customizing Options (Display)

Setting Function

1 In **MENU**, select **SETTING**. (refer to “Setting up MENU”)

2 In **SETTING**, use the  button to move to the function you want to change and select the function by using the  button.




DISPLAY

- **PLAY TIME**: displays current play time
- **REMAIN TIME**: displays remaining play time
- **USED SIZE**: displays using memory
- **FREE SIZE**: displays remaining memory




BACK LIGHT

- Use the  button to set the Backlight “ON” time.
- The setting range of Backlight-On Time is 0 to 10 seconds.
- * The backlight does not illuminate when the residual battery level is insufficient.




BEEP

- Use the  button to set the BEEP mode.
- **BEEP ON:** A beep sounds each time a button is pressed.
- **BEEP OFF:** No beep sounds when a button is pressed.

Note :


- No beep sounds while playing or recording of a music/voice file even when set to 'BEEP ON'.

CONTRAST

- Use the  button to set the Contrast.
- The setting range of the contrast, which adjusts the brightness of the screen, is 0 to 10.




SCROLL SPEED

- Use the  button to set the Scroll Speed.
- The setting range of the scroll speed, which adjusts the speed of the track title flow, is 0 to 10.



POWER OFF TIME


- Use the  button to set the Power Off Time.
- The setting is 5 different levels ranging from 0 to 25 seconds. The power will turn off after the set time if no button is pressed when the playback ends.



Note :


- When '0 second' is set, the power will not turn off but will remain in Standby Mode.

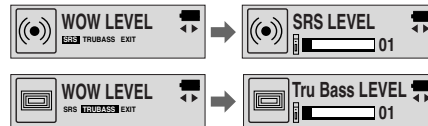
DEFAULT VOLUME

- Use the  button to set the Default Volume.
- The default volume setting range of the unit is 0 to 25. If the Volume is above 25(26-30) when you turn the device off, it will default to 25 when the device is turned back on.
- If the Volume is set to 25 or lower when you turn the device off, it will return to that setting when it is turned back on.




WOW LEVEL

- The levels of SRS and TRUBASS can be adjusted.
- Select the mode you want by using the  button.
- The level for SRS and TRUBASS can each be set within the range of 0 to 10.



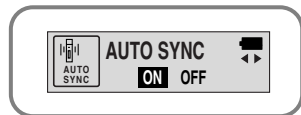
ENCODE

AUTO SYNC


- Use the  button to set the Encode AUTO SYNC.
- **ON**: Automatically creates a file for each track.
- **OFF**: All songs recorded in ENC mode are saved in a single file.

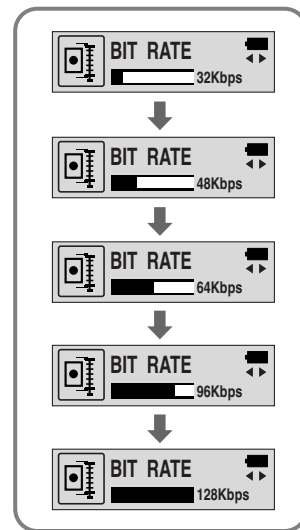
Note :

- What is Auto Sync?
Auto Sync senses the input sound during MP3 encoding. If there is no sound, encoding stops automatically. Otherwise, encoding keeps going. You can save MP3 files separately.
Example) If you encode a CD including 10 music files with MP3, 10 MP3 files are created automatically when set the Auto Sync to ON.
- Auto Sync function can support from 64Kbps to 128Kbps.










BIT RATE

- Use the  button to set the Encode BIT RATE.
- When encoding music into an MP3 file, you can select one of the following bit rates: 32Kbps, 48Kbps, 64Kbps, 96Kbps and 128Kbps.



Description of Buttons (yepp player)

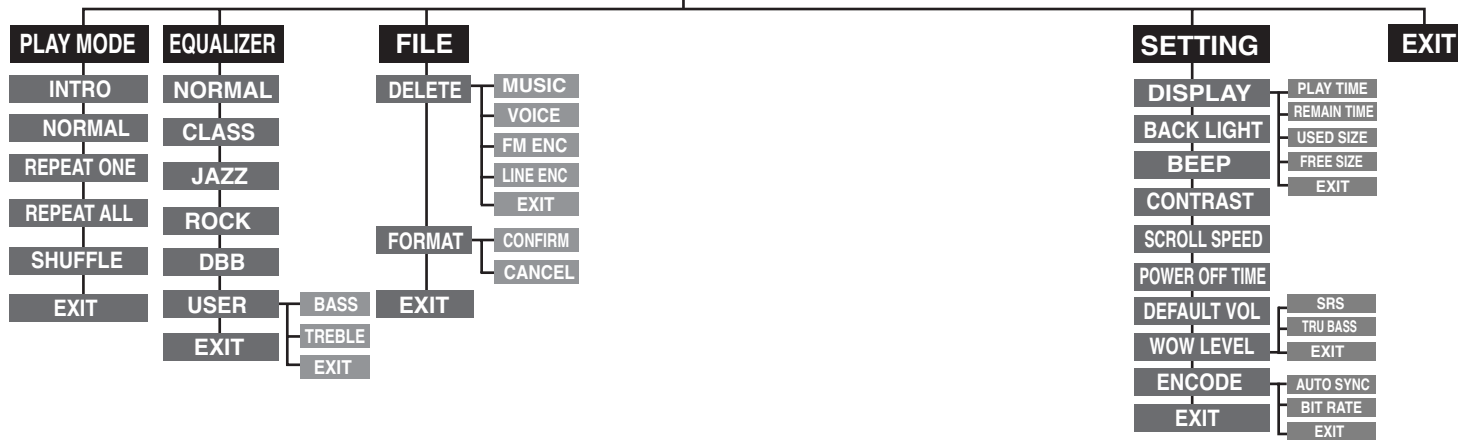
BUTTON	STATUS	PRESSING LENGTH	RESPONSE
	Power Off		Power On, and play
	Play		Pause(When no button is pressed for 10 seconds, yepp powers off automatically) Press and hold the 2 seconds Power Off.
	MENU Mode		Cancel
	Intro Play		Cancels Intro, returns to Play mode
	Play	Less than 1 second	Play the next track
	Play	Longer than 1 Second	Fast forward search in PLAY mode
	Stop/Pause		Move to the next track
	FM Mode		Frequency Search
	MENU Mode		Cancel MENU
	Play	Short	Within 5 seconds from the start: Play the previous track After 5 seconds from the start: Play the beginning of the current track.

	Play	Longer than 1 Second	Fast reverse search in PLAY mode
	Stop/Pause		Move to the previous track
	FM Mode		Frequency Search
 Volume	Play or Stop Mode		Volume increase/decrease
	MENU Mode		Move MENU
 Mode	Play	Short	Set the starting point for loop function
	During Loop Setting	Short	Loop mode
	Loop Mode	Short	Cancel loop mode
	Stop	Short	Changing modes (music ↔ voice ↔ FM)
	Play or Stop Mode	Longer than 2 Seconds	Enter MENU
	MENU Mode		Selection/Exiting MENU
 RECORDING	Play or Stop Mode		Voice recording
	VoiceRecording/Encoding		Voice Recording/Encoding Stop
	Line in Connect		MP3 Encoding
	FM Mode		FM Encoding

MENU Table

MENU

● Select with the  button and move.



Troubleshooting

yepp does not work and the LCD displays nothing.

- Check the battery capacity
- Check to see if the battery is inserted to the right poles (+ , -)

In PLAY mode, music is not played after pressing the ►/■ button

- Check to see if MP3 or WMA files are saved in the built-in memory.
- Check to see if the HOLD switch is locked.
- Check if the REC button is on.
- Check if the memory is full.

Files cannot be downloaded.

- Check to see if the driver is installed correctly in the computer.
- Check the connection between yepp and computer.
- Check and/or replace the battery, turn on the yepp's power.
- The Windows98 operating system limits the number of files you can save.
Please save your music files by creating a subfolder.

Backlight does not work.

- Check the backlight setup.
- When the battery power is low, the backlight will go out.

The buttons do not work.

- Check setting of Hold switch.
- When the message "Please Reformat" is displayed, please format your YP-55 by using "YP-55 updater" in the desktop.

yepp keeps being turned off.

- In Stop mode, the power is automatically turned off after ten seconds (changes depending on settings).
- Check to see if there are files saved in it.

Something's wrong with play time displayed during Play mode.

- "VBR SONG" message is displayed while VBR (Variable Bit Rate) file is playing.

LCD window is dark

- Check Contrast

Specifications

Model	YP-55
Built-in Memory capacity	128MB(YP-55 H), 192MB(YP-55 i), 256MB(YP-55 V), 512MB(YP-55 X)
Voltage	1.5V×1 (AAA/LR03 size alkaline battery)
Playing time	lasts up to 15hours (Alkaline battery, MP3 128Kbps, Vol level 20)
Dimensions/Weight	26 × 81 × 26 mm/45g (without battery)
Case	Plastic/Aluminum
Noise Ratio	80dB with 20kHz LPF (1KHz 0dB)
Earphones Jack Output Power	5mW(Max 10mW)/CH (16 Ω)
Output Frequency Range	20Hz~20kHz
Operating Temperature Range	-5 ~ +35°C (23 ~ 95F)
FM Frequency	87.50 ~ 108.00 MHz
FM Signal to Noise Ratio	45 dB
FM T.H.D	1%
FM Useable Sensitivity	10 dB
File Support	MPEG1/2/2.5 Layer3 (8Kbps ~ 320Kbps, 8KHz ~ 48 KHz) WMA (48Kbps ~ 192Kbps, 8KHz ~ 48KHz)

Memo